

PROFECTIV® Mega Growth®

ADVANCED PROTECTION
& STRENGTHENING
ANTI-DAMAGE
NO-LYE
RELAXER



NEW
IMPROVED
ULTIMATE
PROTECTION
of
TEMPLES, CROWN
& ENDS

RELAXER Application Tips



1. Before starting protect your relaxed ends with *BreakFree*®. Only apply to ends. DO NOT



2. Apply relaxer crème to NEW GROWTH ONLY.



3. Do NOT apply relaxer crème to previously relaxed hair.

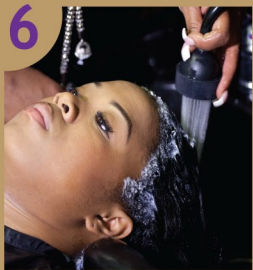


4. Gently smooth with fingers using a slow motion in one direction only. (Apply to edges and temple area last).



5. Do Not comb relaxer crème through relaxed hair (pulling hair can create unwanted damage).

RINSING & NEUTRALIZING Tips



6. Rinse completely with water - don't pull or tug hair.



7. Smooth on neutralizing shampoo - don't pull or tug hair.



8. Wait 1 minutes before gently lathering.



9. Rinse and check for pink lather. Pink lather means you should shampoo and rinse again.



10. Reapplying shampoo and rinsing 3 times is recommended. (Check for pink lather at edges, ears and nape).

www.megagrowth.com